

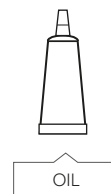
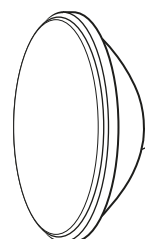
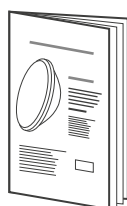
## UNIVERSAL PAR56 LED LAMP

COLD WHITE LIGHTING FOR POOLS

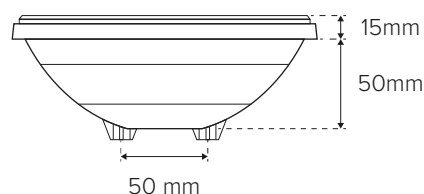
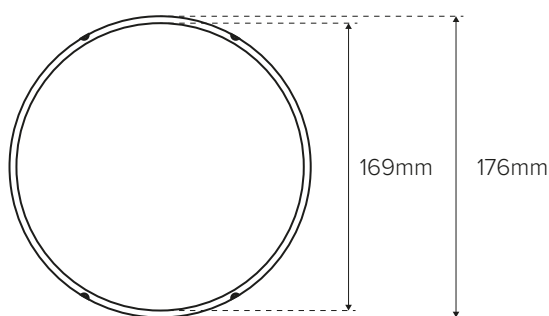


**Model :** 502815 - 502808  
**Type :** 60 LED 3528 / 120°  
**Color :** cold white 6500K  
**Control :** On/Off  
**Material :** lens and cup in Polycarbonate (PC)  
**Wire connexion :** 2 screw terminals  
**HS code :** 9405423100  
**Bar code :** 3700450502815  
**Bar code :** 3700450502808

### PACKAGING AND THE CONTENT



### DIMENSIONS



### PACKING

Part Number.	Box	Weight	Size	Carton	Weight	Size	Pallet	Weight	Size
502815	1U	0,64kg	20x20,5x11cm	6U	4,4kg	61,5x22x22,5cm	432U	330kg	100x120x224cm
502808	N/A	N/A	N/A	12U	6,2kg	53x38x19,5cm	648U	348kg	100x120x210cm

## PHOTOMETRY

Ra (IRC) : 85  
Beam angle : 120°  
Nominal luminous flux : 1450 lumens max.  
Extractable light source : ALP01  
Light source energy class : D  
his swimming pool luminaire contains an extractable LED light source of type ALP01 and energy class (D).



EN 17645



EPREL

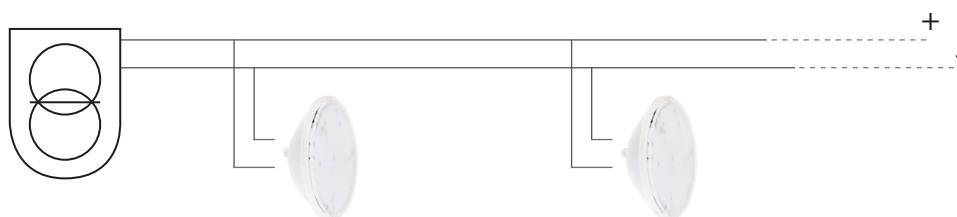
## ELECTRICAL PARAMETERS

Electric class : III  
Instant power max : 13W  
Input voltage : ~12V(AC) 50/60Hz or =20V(DC)  
PF max : 0,7 if ~12V(AC)  
PF max : 1 if =20V(DC)  
Mini power supply with  $[(P_i / PF) + 20\%]$  if ~12V(AC) = 23VA  
if =20V(DC) = 16VA

**CLASS III**

## CONNECTION

Use a 2 x 1mm<sup>2</sup> minimum cross section of connecting cable, to adapt according to the distance between the junction box of the projector and the transformer well as the power input.



~12V(AC)  
OR =20V(DC)

USE ONLY WITH A SAFETY TRANSFORMER / DO NOT PLUG IN SERIES /  
PROTECT THE CONNECTOR WITH INSULATING GEL

## OTHER PARAMETERS

Protection index : IP68 -1,0m  
LED life span : > 10 000h  
On/Off cycles : > 100 000  
Use : This pool light is designed for use in permanent immersion in water with a IP68 waterproof rating. The spin welding assembly process of the optical part with its support, does not allow its reparability. The light source is not replaceable and in case of failure, it is necessary change all the luminaire.

IP68  
1,0m



Hg  
0.0 mg



## CERTIFICATIONS

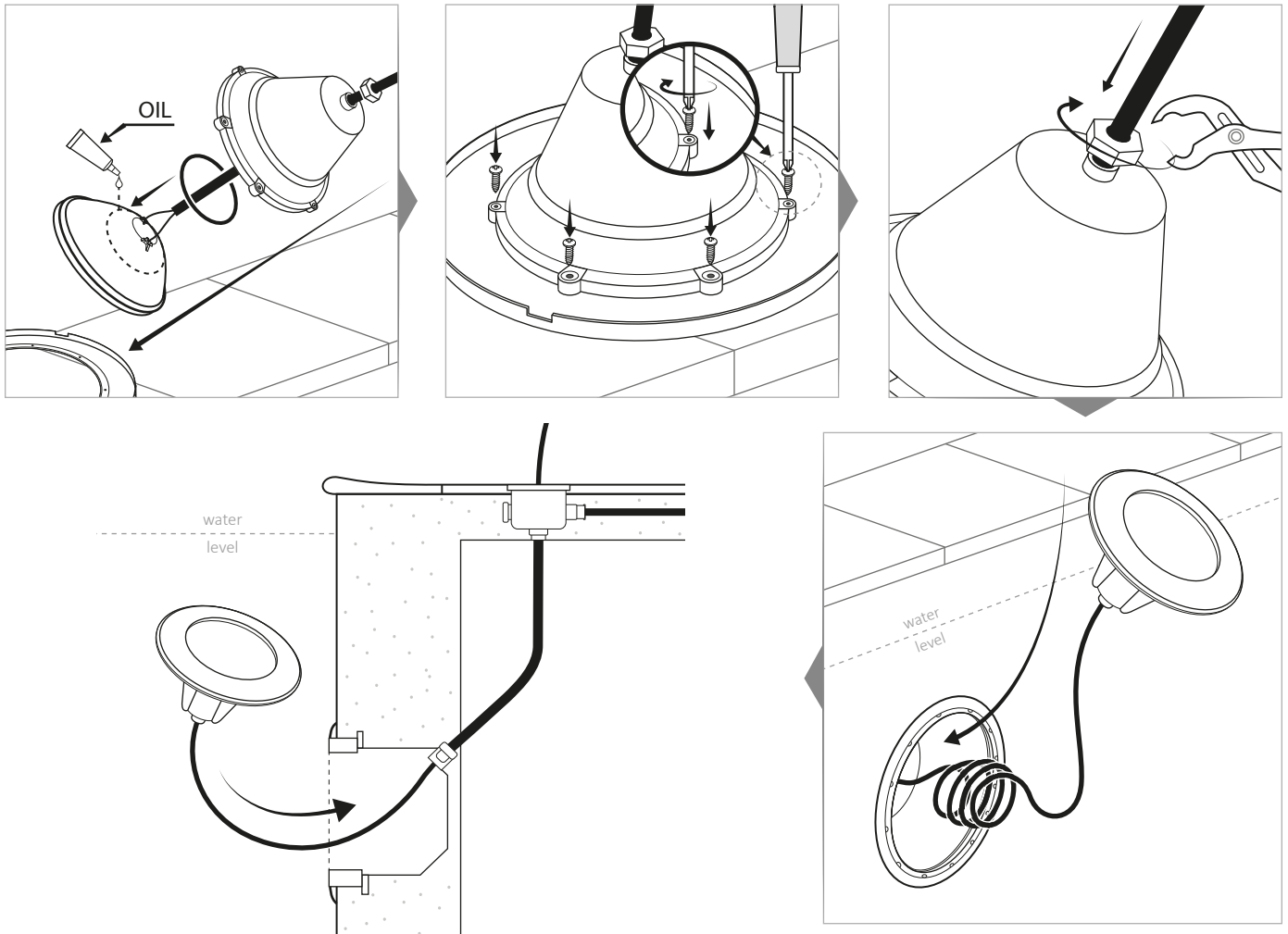
EMC 2014/30/EU Directive.  
EN60598-1 / EN60598-2-18 Norm in all its modifications.



RoHS  
COMPLIANT

REACH  
COMPLIANT

## PRINCIPLE OF INSTALLATION



For more information, see the product leaflet.